

ENSAFE

creative thinking. custom solutions.

ENGINEERING | ENVIRONMENTAL | HEALTH & SAFETY | TECHNOLOGY

VISION

We seek innovative and creative solutions.

We nurture our people with growth and development opportunities.

We build enduring, trustful relationships with each of our clients.

We focus on high ethical and safety standards.

SINCE 1980

WHO WE ARE

EnSafe began as a two-person firm in 1980, navigating complex regulatory compliance issues on behalf of our clients. Now with offices nationwide, we've become a recognized leader in providing engineering, environmental, health & safety, and information technology services.

We can't walk a mile in your shoes, but we can sure try to make that road smoother when it comes to your project's budget, schedule, down-line liability, community relations, management buy-in, and future longevity.



WE ARE

Biologists / Chemists
Certified Hazardous Materials Managers (CHMM)
Certified Industrial Hygienists (CIH)
Certified Safety Professionals (CSP)
Computer Specialists (GISP, Application Developers)
Ecologists / Geophysicists
Licensed Environmental Professionals (LEP)
Microsoft Certified Professionals
Professional Engineers (PE)
Professional Geologists (PG)
Professional Wetland Scientists (PWS)
Project Management Professionals (PMP)
Qualified Hydrologic Professionals (QHP)
Risk Assessors (Human Health & Ecological)

CREATIVE THINKING.

Your to-do list is full.

We've got you covered when it comes to ...

Environmental Management & Planning

Custom Solutions. More than a tagline.

As our founder likes to say, we're truly "brainpower by the hour."

We think, question, disrupt, learn, listen, understand, ... and then design front-edge environmental solutions that are smart, nimble, and strategic.

Civil / Design Engineering

One size doesn't fit all.

In a "sea of sameness" our engineering solutions stand out. Why?

They're customized to each client, to each project, to each site. And to satisfy budget and schedule constraints, as well as long- and short-term goals.

Natural & Water Resources

Protecting what matters.

The lack of standards when it comes to ecological receptors can lead to time-consuming, expensive, difficult to understand, and ineffectual assessments.

We apply sound science and regulatory expertise to achieve clear, efficient, and economical results.

Health & Safety

Freedom to do what you do best.

Your people are your lifeblood.
(Our people are ours, too!)

Our top priority is protecting your people, so their top priority can be focusing on your core business.

CUSTOM SOLUTIONS.

Environmental Restoration

Tackling tough challenges.

Engineering News-Record consistently ranks EnSafe among the top environmental and design firms because we're able to solve our clients' toughest environmental challenges with cradle to grave expertise.

Technology

Award-winning for good reason.

Today's environmental, health and safety issues can seem monumental. We harness technology to move from the Information Age into the Knowledge Era.

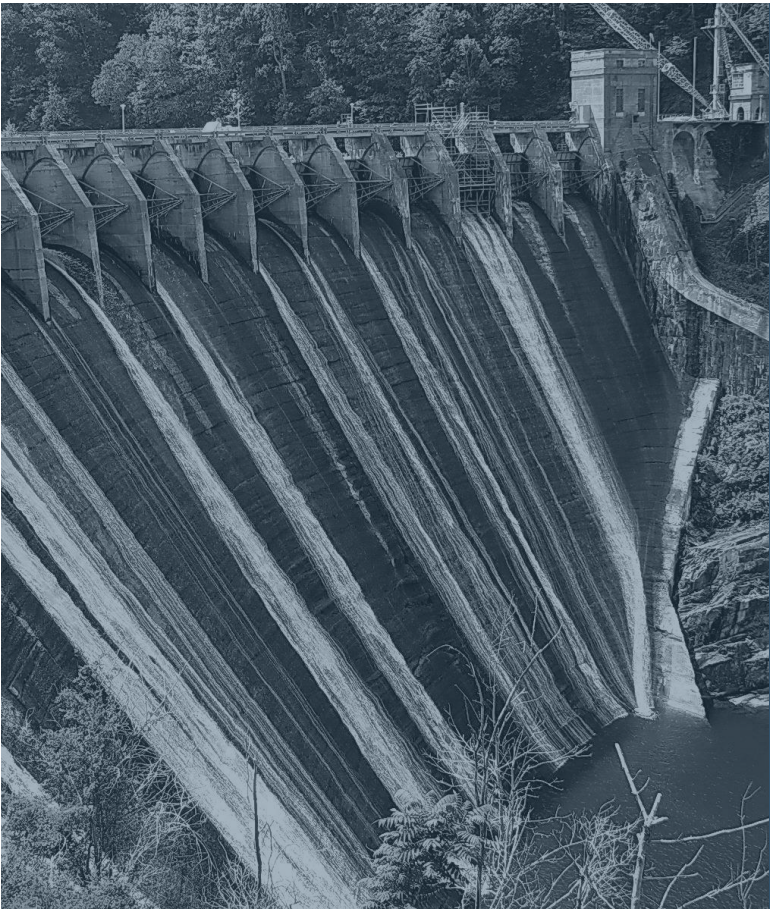
We make your challenges not only manageable; we transform them into empowering assets.



OUR CLIENTS

Client diversity inspires our creativity.

To say our client roster is diverse is quite an understatement. One thing all of our clients have in common — we've earned their trust through hard work, expertise, resources, and a genuine commitment to more than just offering short-term solutions. We build long-lasting relationships and enduring results.



“

EnSafe personnel always think about the issues as if they were in your shoes as owners of the business.

”

Kim Burke (ret)
Taft Stettinius &
Hollister LLP

- Government (Federal, State, Local)
- Aerospace
- Manufacturing
- Ag Chem / Pesticides & Fertilizer
- Power / Utilities
- Mining & Mineral Processing
- Oil & Gas / Petroleum
- Real Estate
- Legal Services

- Primary & Secondary Metals
- Chemicals
- Transportation / Ports & Goods
- Automotive
- Waste Management
- Healthcare / Pharmaceuticals
- Pulp & Paper / Forestry Products
- Food & Kindred Products



“

I confidently recommend the EnSafe team ... efficient, responsive, excellent communication skills. They are proactive in anticipating potential problems, making necessary changes to adapt to evolving projects, and managing costs.

”

Sherell Heidt
Texas Commission on
Environmental Quality

Stellar safety record well below industry standard

**ZERO
INCIDENT
SAFETY CULTURE**



NATIONAL RESOURCES LOCAL RELATIONSHIPS

Biologists / Chemists

Certified Hazardous Materials Managers (CHMM)

Certified Industrial Hygienists (CIH)

Certified Safety Professionals (CSP)

Computer Specialists (GISP, Application Developers)

Ecologists / Geophysicists

Licensed Environmental Professionals (LEP)

Microsoft Certified Professionals

Professional Engineers (PE)

Professional Geologists (PG)

Professional Wetland Specialists (PWS)

Project Management Professionals (PMP)

Qualified Hydrologic Professionals (QHP)

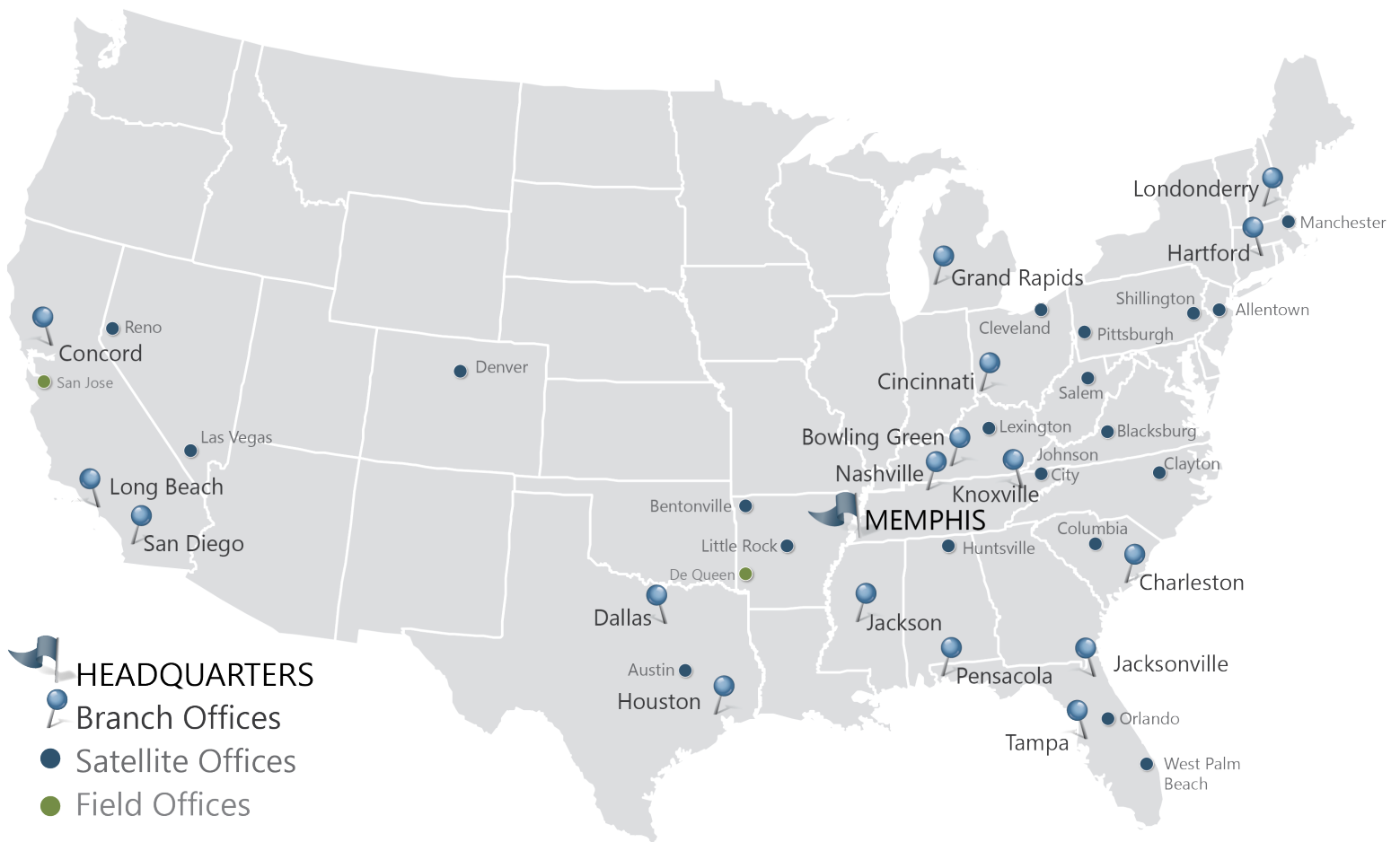
Risk Assessors (Human Health & Ecological)



WHERE WE ARE

Solutions provided in:

- all states & Puerto Rico
- all USEPA regions
- 60+ countries



The following seven pages highlight our capabilities
in our major service offerings.

CIVIL / DESIGN ENGINEERING
ENVIRONMENTAL MANAGEMENT & PLANNING
ENVIRONMENTAL RESTORATION
NATURAL & WATER RESOURCES
HEALTH & SAFETY
TECHNOLOGY

EnSafe Inc. is a global professional services firm providing engineering, environmental, health & safety, and technology services to industry and government clients worldwide. Our dedication to the stewardship of our clients' resources is best explained by one of our longstanding clients: "EnSafe personnel always think about the issues as if they were in your shoes as owners of the business." Regulators know us as technically competent and appropriately assertive in representing our clients' best interests. What really sets us apart is our outside-the-box thinking that leads to innovative and cost-effective solutions.

ENVIRONMENTAL MANAGEMENT & PLANNING

- Compliance Auditing
- Cost Estimating for Financial Reserves
- Due Diligence / Mergers & Acquisition Support
- Emergency Response & Preparedness
- Environmental Compliance
- Environmental Management Systems (EMS) / ISO14000
- Environmental Training
- Permitting
- Phase I / II Environmental Site Assessments
- Regulatory Interpretation / Negotiations

DESIGN ENGINEERING

- Civil Site Planning and Land Development
- Hydrology and Hydraulics
- Construction Management
- Industrial Wastewater Engineering
- Remediation Engineering
- Process/Facility Engineering

TECHNOLOGY

- Software Development
- Geographic Information Systems
- Network Infrastructure / Databases and Reporting

HEALTH & SAFETY

- Occupational Safety and Health Administration (OSHA) Compliance
- Industrial Hygiene / Indoor Air Quality Assessments
- Health & Safety Training
- Process Safety Management
- Safety Management Systems (VPP / OHSAS 18001 / ANSI Z10)
- Construction Safety Support
- Electrical Safety / Lockout / Tagout
- Fire Protection and Life Safety Engineering
- Machine Guarding Risk Assessments
- Confined Space Hazard Assessments
- EHS Staff Augmentation Services

ENVIRONMENTAL RESTORATION

- Site Investigation
- Risk Assessment
- Remediation
- Decontamination / Decommissioning
- Emerging Contaminants (PFAS, 1,4-dioxane, etc.)

NATURAL & WATER RESOURCES

- National Environmental Policy Act (NEPA)
- Ecological Resources Management & Planning
- Wetlands Delineation / Mitigation / Banking
- Stream Alteration / Restoration

creative thinking. custom solutions.

- Over 370 employees
- Locations coast to coast across the U.S.
- Financially stable 40+ years
- Employee-owned

EnSafe Edge

- Cost-Effective, Custom Solutions
- Technical Expertise and Experience
- Award-Winning Technologies

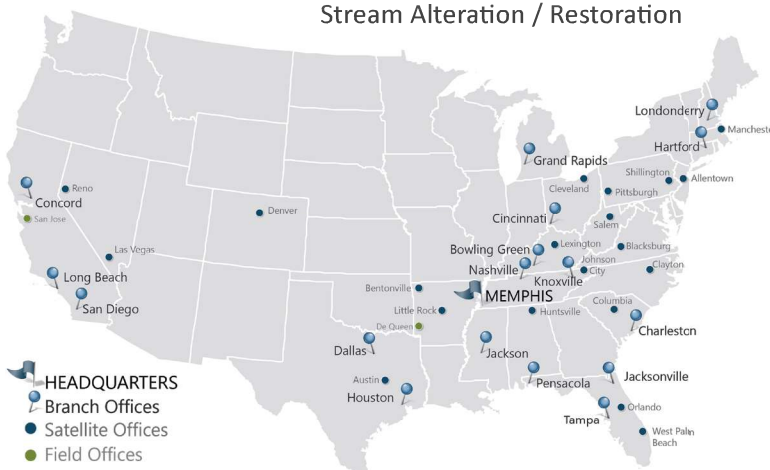
Technical Expertise

- Biologists / Chemists
- Certified Hazardous Materials Managers (CHMM)
- Certified Industrial Hygienists (CIH)
- Certified Safety Professionals (CSP)
- Computer Specialists (GISP, Application Developers)
- Ecologists / Geophysicists
- Licensed Environmental Professionals (LEP)
- Microsoft Certified Professionals
- Professional Engineers (PE)
- Professional Geologists (PG)
- Professional Wetland Scientists (PWS)
- Project Management Professionals (PMP)
- Qualified Hydrologic Professionals (QHP)
- Risk Assessors (Human Health & Ecological)

Contact Us

Ginny Gray Davis, PG
 (865) 693-3623
 (513) 520-7194 cell
 ggray@ensafe.com

TEL 800.588.7962



Customized Engineering Solutions - Concept to Commissioning

One size doesn't fit all. That's why EnSafe's engineering solutions are customized to each of our client's unique project goals. Our engineers is committed to developing cost-effective, site-specific solutions to accomplish both long- and short-term goals. We focus on providing our clients with the complete picture – specific goals, constraints, and risks clearly communicated. This "front and center" approach drives strategic, nimble delivery.

CIVIL SITE PLANNING & LAND DEVELOPMENT

Master Planning
Grading & Stabilization Design
Landfill/Leachate Design & Management
Sewer Utilities Design & Relocation
Roadways, Driveways, Sidewalks & Parking Lots
Green Infrastructure/Low Impact Design

HYDROLOGY & HYDRAULICS

Stormwater Management Design
Stream & Wetland Restoration
Drainage Design

CONSTRUCTION MANAGEMENT

Design/Build
Turn-Key Solutions
CEI Services
Construction Oversight & Management

INDUSTRIAL WASTEWATER ENGINEERING

Industrial Wastewater Process Design
Industrial Wastewater Treatment
Treatability/Pilot Testing
Emerging Contaminant Treatment
Waste Minimization & Reuse
Collection & Storage Systems
Optimization, Operations & Maintenance

REMEDIATION ENGINEERING

Groundwater, Soil, Air, Leachate Treatment
Innovative Technologies
Pilot Studies
Vapor Intrusion
Operations & Maintenance
Remedy Optimization
Emerging Contaminant Assessment & Remediation (PFAS, 1,4-dioxane, etc.)
Decontamination/Decommissioning

PROCESS/FACILITY ENGINEERING

Process Water Systems
Ventilation Systems
Condensate Collection & Treatment
Water Balance Auditing & Conservation
Chemical/Gas Cylinder Storage & Containment Areas
Utility Mapping (Gas, Water, Compressed Air, Nitrogen)
Discharge/Waste Minimization
Equipment Upgrades/Retrofits
Instrumentation & Controls, Remote Telemetry Improvements
Real-Time Monitoring & Data Collection
Safety Equipment/Protections
Decontamination/Decommissioning

creative thinking. custom solutions.

40+-year successful track record
Coast to coast projects & relationships
Sustainable, practical, technology-driven

Technical Expertise

Chemical Engineers
Civil Engineers
Environmental Engineers
Industrial Engineers
Mechanical Engineers

Representative Clients

Carrier	Department of Energy
Raytheon Technologies	U.S. Navy
Lockheed Martin	U.S. Army Corps of Engineers
Collins Aerospace	City of Memphis, TN
Novelis	City of Pomona, CA
Dal-Tile Corporation	City of Tampa, FL
Weyerhaeuser	Shelby County
Helena Chemical	TN Community Redevelopment Agency
Buchanan Oil & Gas	BFI Waste Services
Marubeni-America	
Goodyear Tire & Rubber	

Contact Us

Chris Triplett, PE, PMP
(901) 937-4249
(901) 356-9187 cell
ctriplett@ensafe.com

Bridget Morello, PE
(813) 734-7985
(813) 205-2355 cell
bmorello@ensafe.com

TEL 800.588.7962

Applying Innovation and Creativity to Compliance and Permitting Challenges

Environmental stewardship requires robust management and planning. Our diverse staff of environmental specialists are ready to apply innovation and creativity to whatever challenges your business currently faces within the myriad of local, state, and federal regulations. Whether we are charged with evaluating the compliance status of an industrial facility, quantifying environmental liabilities and risks, or assessing properties for real estate transactions, we are committed to providing you with pragmatic, cost-effective strategies for maintaining compliance, minimizing liabilities, and improving environmental performance.

creative thinking. custom solutions.

REGULATORY COMPLIANCE AUDITS

Corporate Audit Programs, integrating RCRA, CWA, CAA, TSCA, EPCRA, CERCLA, SDWA, FIFRA, & UST obligations

Focus on Local, State, & Federal Requirements, Corporate Policies, Facility Procedures, and/or Best Management Practices

Single-Media to Multimedia Approach
Operational Compliance Assessments

PERMITTING

Clean Water Act

Clean Air Act

Resource Conservation & Recovery Act

Ecological (wetlands)

Operational Changes / Facility Expansions

COMPLIANCE MANAGEMENT

Air Quality Management

Water Quality Management
(Wastewater & Storm Water)

Waste Minimization, Pollution Prevention, Materials Management (including emerging contaminants like PFAS, 1,4-dioxane, etc.)

Emergency Management, Contingency & Spill Response Plans

Management System Evaluations & Risk Management Tools

Environmental Management Systems / ISO 14001

COMPLIANCE ASSISTANCE

Monitoring Changes in Law, Regulations, & Rulemaking

Providing Regulatory Interpretations

“Regulatory Helpdesk” Support

Report Filing Assistance and Submittals

ENVIRONMENTAL / HEALTH & SAFETY RESPONSIBILITY TRAINING

Facilitating or Supervising Corrective Action Implementation

Community Relations

Environmental Liability Assessments

Comprehensive EH&S Due Diligence Audits

Phase I/II Environmental Site Assessments

Transaction Screens

Land Contamination & Brownfields Issues

Other Merger & Acquisition Support

Flexibility: Multi-year nationwide audit programs or sole-media consulting of a single process

Multi-regulatory program experience in 45 states and all ten U.S. EPA regions

Keen perception of how specific actions affect long-term, sustainable improvements in environmental performance

Emphasis on understanding processes and client objectives versus use of generic checklists

Experience working under Attorney-Client Work Privilege and managing sensitive client issues

Realization of both corporate and operating unit objectives and effectively communicating across lines by adapting to client culture

Technical Expertise

Cost Estimating for Financial Reserves
Regulatory Interpretation / Negotiations
Litigation Support

Innovative Software Solutions

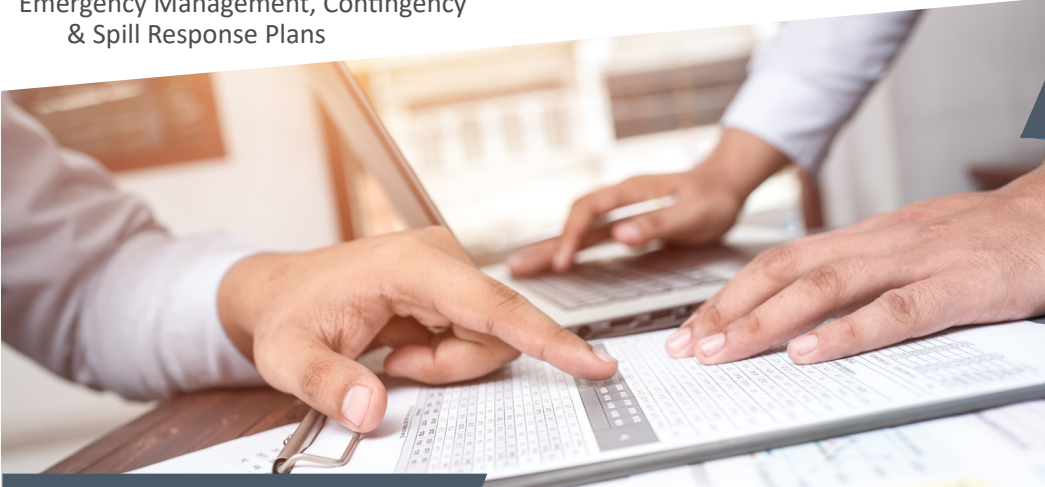
Corporate Audit Program Management

Contact Us

Bry Roberson, CHMM
(615) 252-2811
broberson@ensafe.com

Don Bradford, CHMM, CPEA
(901) 372-7962
dbradford@ensafe.com

TEL 800.588.7962



Finding Optimal Solutions to Your Environmental Issues

EnSafe's experienced environmental restoration professionals are equipped to restore your resources to renewed productive reuse – whether environmental remediation of a previously contaminated site, redevelopment of a Brownfields property to serve the local community, or decontamination and decommissioning of a site for reuse by an incoming industry. We ask the right questions to define the problem and design a solution that considers traditional constraints, such as budget, down-line liability, schedule, community relations, and management buy-in.

creative thinking. custom solutions.

FIELD INVESTIGATION

Sampling Plan Design
Groundwater, Soil, & Direct-Push
Technology Sampling
Soil-Gas Surveys
Field Sample Management
Investigation-Derived Waste
Management
Response Strategies for Emerging
Contaminants (like PFAS,
1,4-dioxane, etc.)

ENVIRONMENTAL MODELING

Hydrogeologic Modeling
Geochemical Modeling
Fate & Transport Modeling
Spatial & Trend Analysis
Statistical Analysis
Conceptual Site Model Development
Forensic "fingerprinting" for reliable
source identification, age-dating,
and fate and transport evaluations

RISK ASSESSMENT

Ecological & Human Health Assessment
Data Quality Objectives & Planning
Risk Evaluation of Removal
Alternatives
Independent Technical Review
Risk Management Support / Training

ANALYTICAL SERVICES

National & Local Subcontract
Laboratories
Data Validation
Data Management & Electronic
Storage
Data Integration

REMEDIATION

Monitored Natural Attenuation
Enhanced biological and geochemical
injections
Groundwater Containment /
Hydraulic Controls, Capping,
Slurry Walls /Barriers, Trench
Collection, and Permeable
Barriers
Excavation & Disposal / Waste
Profiling, Transport, Disposal
In Situ Heating Low-Temperature
Thermal Desorption
Vapor, Liquid, and Multi-Phase
Extraction
Fast-Water Oil Spill Response
Emerging Contaminant Remediation
(PFAS, 1,4-dioxane, etc.)

GEOLOGICAL SERVICES

Monitoring Well Design & Installation
Recovery Well Design & Installation
Soil Borings
Lithologic Interpretation
Surface and Borehole Geophysics

COMMUNITY RELATIONS

Community Outreach Programs
Planning, Training
Multimedia Public Meeting Support
Public Document Repository
Maintenance

Cost-Saving, Innovative Solutions
National Contracts with Laboratories
National Contracts with Drillers
In-House Geophysics

Technical Expertise

Registered Professional Engineers
Registered Professional Geologists
Nationally Certified Professional
Geologists
Certified Hazardous Materials Managers

Clients

Tennessee Department of Transportation
Helena Chemical Company
Raytheon Technologies
Terminix
U.S. Navy
Weyerhaeuser
ServiceMaster
ALCOA

Contact Us

David Warren, PG
(843) 628-1785
dwarren@ensafe.com

Ginny Gray Davis, PG
(865) 693-3623
ggray@ensafe.com

TEL 800.588.7962

Protecting what matters

Protection and management of natural resources (our streams, wetlands, and endangered species) can have a significant impact on project schedules and budgets. Given today's complex regulations and the ever-increasing emphasis on judicious natural-resource management methods, partnering with a knowledgeable, responsive, and reliable consultant is essential. EnSafe's track record of technical and regulatory expertise has earned us the high regard of both our clients and environmental regulatory agencies.

creative thinking. custom solutions.

AQUATIC RESOURCE SITE ASSESSMENTS

- Site Acquisition Due Diligence
- Wetland Delineations
- Hydrologic/Stream Determinations
- Jurisdictional Determination Guidance
- Mitigation and Impact Cost Estimates
- 404 Permitting and 401 Certifications
- ARAP Permitting (Tennessee)
- State agency and USACE Coordination

WETLAND AND STREAM MITIGATION SERVICES

- Site Feasibility Studies
- Wetland and Stream Mitigation Plans
- Hydrologic Restoration Design
- Vegetative Restoration Design
- Bank Prospectus / Instrument Development
- Permittee-Responsible Mitigation
- Restoration Construction and Revegetation
- Wetland and Stream Mitigation Monitoring

RARE, THREATENED, AND ENDANGERED SPECIES

- Site Acquisition Due Diligence
- Section 7 Consultations
- Rare, Threatened, & Endangered Species Surveys and Assessments
- Bat Habitat Assessments
- Mist Netting, Acoustics, and Telemetry
- Vegetation / Tree Surveys and Inventory

WATER QUALITY ASSESSMENTS

- Stream Habitat Surveys
- Benthic Macroinvertebrate Sampling
- Analytical Sampling

RELATED ECOLOGICAL SERVICES

- National Environmental Policy Act (NEPA)
- Ecological Risk Assessment
- Erosion Prevention and Sediment Control

Full spectrum environmental service professionals, including biologists, ecologists, wetland scientists, risk assessors, GIS technicians, landscape designers, engineers, geologists, and chemists

Technical Expertise

- Professional Wetland Scientists (PWS)
- Professional Engineers (PE)
- Professional Geologists (PG)
- Qualified Hydrological Professionals (QHP)
- Certified Professionals in Erosion and Sediment Control (CPESC)
- Certified Ecologists
- Level 1 and 2 Erosion Prevention Sediment Control

Clients

- U.S. Navy
- Defense Logistics Agency
- U.S. Department of Transportation—Surface Transportation Board
- Tennessee Valley Authority
- Tennessee Department of General Services
- Louis Dreyfus Company
- Weyerhaeuser Co.
- Shelby County Government

Contact Us

David Warren, PG
(843) 628-1785
dwarren@ensafe.com

Will Gray
(901) 937-4212
wdgray@ensafe.com

TEL 800.588.7962



Freedom to do what you do best

EnSafe Inc. understands that the lifeblood of any successful organization originates with its people. When workers are protected, they are freed to focus on your company's core business. Our top priority at EnSafe is providing cost-effective, creative solutions to your most challenging health and safety issues.

EnSafe's Health & Safety Team helps you protect your most valuable resource ... your people.

COMPLIANCE

Occupational Safety and Health Administration (OSHA) Compliance Auditing
Job Hazard Analysis
Personal Protective Equipment Assessments & Selection
Gap Analysis
Due Diligence / Expert Witness
Lockout / Tagout Procedures
Confined-Space Hazard Assessments

INDUSTRIAL HYGIENE

Baseline & Periodic Air Sampling
Indoor Air Quality Assessment
Microbiological (Mold) Assessments & Solutions
Program Evaluation & Development
Noise Evaluations & Controls
Ventilation System Assessment
Chemical Exposure & Control Assessments
Asbestos & Lead Assessments

TRAINING

Hazardous Waste Operations & Emergency Response (HAZWOPER)
Traditional & Virtual Training
OSHA Compliance
Emergency Response

HEALTH AND SAFETY

Program Development & Review
Voluntary Protection Program (VPP) Support & Mentoring
Safety Staff Augmentation
OSHA Compliance Liaison
Occupational Health & Safety Management Systems & Implementation Plans
Database Safety Management Systems
Ergonomics Assessments

PROCESS SAFETY MANAGEMENT

Process Safety Management (PSM) Development
Process Hazard Analysis (PHA)
PSM Compliance Audits
Mechanical Integrity Programs

SAFETY ENGINEERING

Machine-Guarding Assessment & Solutions
Construction Safety Support
Incident Investigations
Electrical Safety (NFPA 70E)

creative thinking. custom solutions.

Risk vs. Compliance Solutions
U.S. & Global Experience
Insourcing & Outsourcing Solutions
Turnkey Health & Safety Solutions
Comprehensive Health & Safety Services
Professionally Certified Staff

Technical Expertise

Certified Industrial Hygienists (CIH)
Certified Safety Professionals (CSP)
Certified Professional Engineers (PE)
Certified Hazardous Materials Manager (CHMM)

Clients

Owens Corning	Retia
Avery Dennison	Nissan
International Paper	WestRock
Raytheon Technologies	BAE Systems
Aleris International	Lockheed Martin
Hydro Extruded Solutions	
Tennessee Valley Authority	

Contact Us

Bayless Kilgore, CIH, CSP
(270) 843-1622
bkilgore@ensafe.com

Joe Hoffman, CIH, CSP
(513)621-7233
jhoffman@ensafe.com

TEL 800.588.7962



EnSafe Inc.'s Technology Division is comprised of three technical support groups — Software Services, Computer-Aided Drafting (CAD), and Geographic Information Systems (GIS). With our Technology Division, additional services (engineering, environmental, and health & safety), and strategic alliances, EnSafe builds teams of highly qualified technical professionals with business domain expertise.

EnSafe specializes in technologies that optimize our clients' business processes — from systems planning and software to interactive mapping and infrastructure management.

creative thinking. custom solutions.

DELIVERABLES, MAPPING, AND IMAGERY

- Survey data
- Imagery and aeriels
- Field sketches
- Health and Safety document support
- Building Evacuation Plans
- SWPPP (Storm Water Pollution Prevention Plans)
- SPCC (Spill Prevention, Control and Countermeasure)
- Geological cross sections and sampling
- Phase 1 Figures
- Noise Mapping
- Data Collection
- Potentiometric Surface mapping
- Interpolation Tools
- Web Viewers
- Hydrologic Modeling
- Historical Imagery
- Isopach modeling
- Contour Generation
- Digital Elevation modeling and contouring

DESIGN/BUILD PLANS

Construction Documents for Environmental, Civil, Structural, Mechanical, Chemical Engineering and Architectural Disciplines

TECHNICAL EXPERTISE AND APPLICATIONS

- Autodesk Civil 3D
- Adobe X
- Trimble
- EoS Positioning Systems
 - Real-Time Kinematic (RTK) GPS
- Topcon Total Station
- Esri
 - ArcGIS Advanced for Desktop
 - ArcGIS Pro Advanced
 - Survey 123
 - Story Maps for ArcGIS
 - Field Maps for ArcGIS
 - ArcGIS Enterprise
 - ArcGIS Online Map Viewer
 - ArcGIS Online Web App Builder
 - ArcGIS Online Instant Apps
- Microsoft
 - .NET Development
 - PowerApps
 - PowerBi
 - Microsoft SQL Server Reporting Services
- EarthSoft EQUiS
- Google
 - Earth Pro
- Trimble SketchUp
- Rockworks
- Various Forms development software

- Proven business DOMAIN expertise
- Award-winning technologies
- Efficient development methodologies
- Current technology investment maximization
- Focus on improving company bottom-line

Clients

- Tennessee Department of Transportation
- Accredo Health, Inc.
- Ergon Inc.
- Raytheon Technologies
- Weyerhaeuser Co.
- Memphis / Shelby County Government
- U.S. Navy

Contact Us

Stephen Holder, MCP
901.372.7962
sholder@ensafe.com

Mark Senne, GISP
901.372.7962
[msenne@ensafe.com](mailto:mssen@ensafe.com)

TEL 800.588.7962

To find out why
more are joining our fold of
long-standing, loyal clients, contact us at
800.588.7962 or **BDTeam@ensafe.com**.

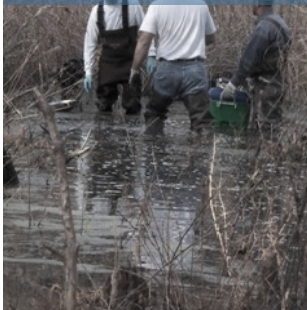
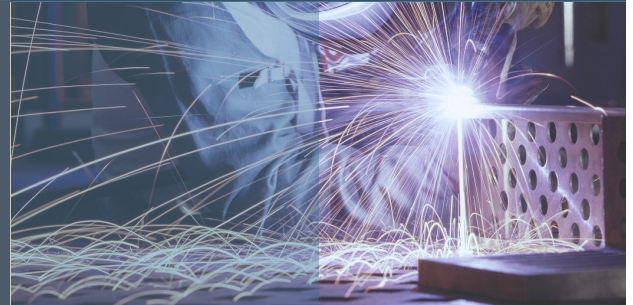
We're excited to begin a relationship.



creative thinking.
custom solutions.



ENSAFE



engineering
environmental
health & safety
technology



800.588.7962

bdteam@ensafe.com

ensafe.com